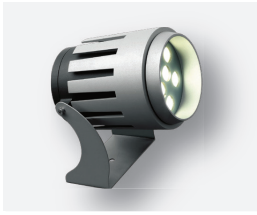


# Lantern series

## LANTERN LED

## URBANLIGHT



### STANDARD COLOUR



### DETAILS

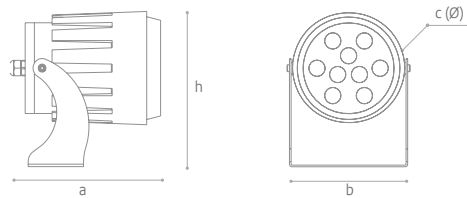
- Body made of die-cast low copper aluminium alloy
- Dark grey powder coating
- Stainless steel clips
- High purity anodized and polished aluminium reflector
- High quality powder coating over chromate treatment
- Screen: tempered glass (5 mm)

### APPLICATIONS

- Parking areas
- Town centres
- Secondary roads
- Low-traffic streets
- Shop-lined streets
- Parks
- Green areas
- Outdoor Lighting



### LANTERN LED



Code	(W)	(lm)	LED n°	(mA)	CRI (Ra)	a (mm)	b (mm)	h (mm)	c (mm)	Beam
LUX-LANT-L9X3W-4K	27	2.230	9	700	80...89	187	182	144	Ø 130	25

### ASYMMETRIC

